

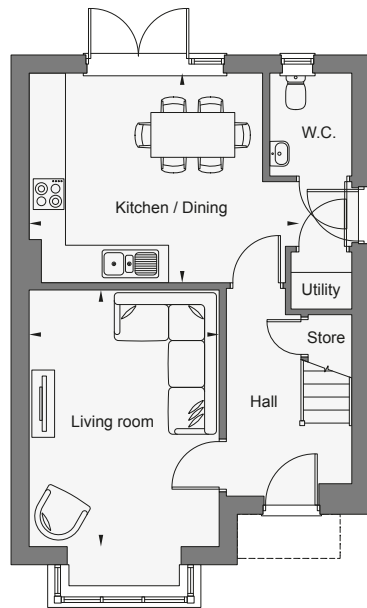
# THE FROGMORE

Millers View, Elsenham

Version 2 – 4th August 2023

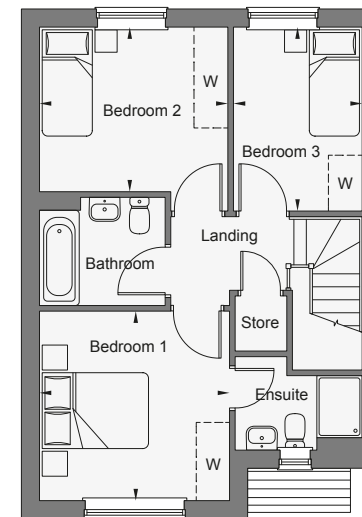
Homes shown: Plot 51

Homes handed: Plot 50



## Ground Floor

Kitchen / Dining	4.83m x 3.73m	15'8" x 12'2"
Living room	4.58m x 3.39m	15'0" x 11'1"



## First Floor

Bedroom 1	3.39m x 3.38m	11'1" x 11'0"
Bedroom 2	3.35m x 2.92m	10'9" x 9'6"
Bedroom 3	3.26m x 2.28m	10'7" x 7'5"